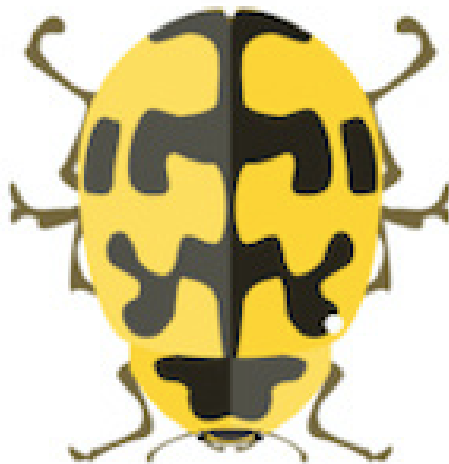


**The answer was 6 legs.**



**How many beetles?**

**1 beetle**



**The answer was 12 legs.**

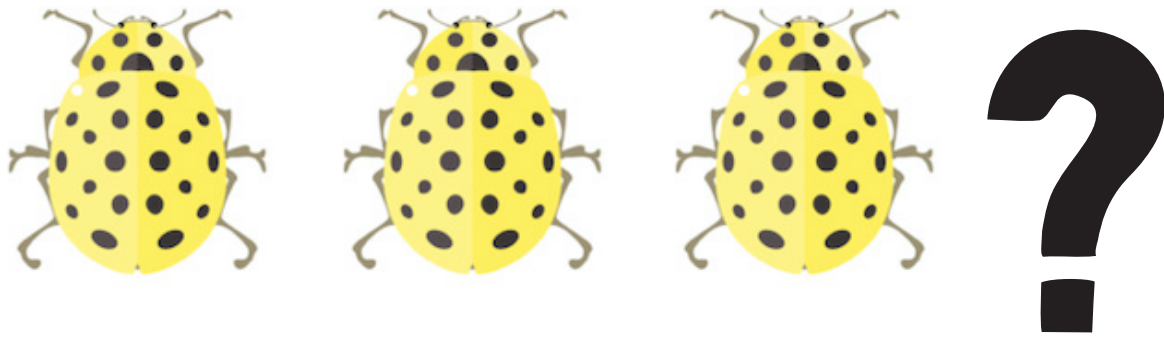


**How many beetles?**

**2 beetles**



**The answer was 18 legs.**

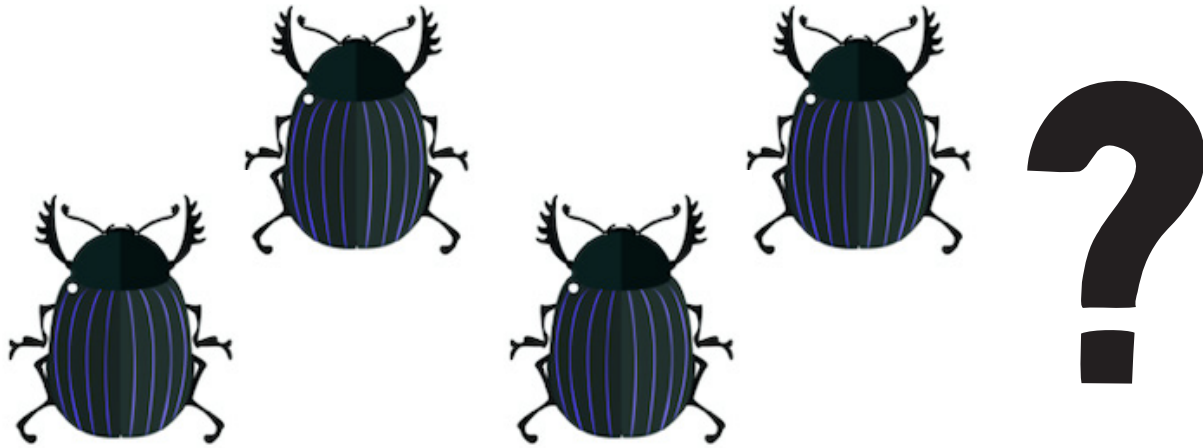


**How many beetles?**

**3 beetles**

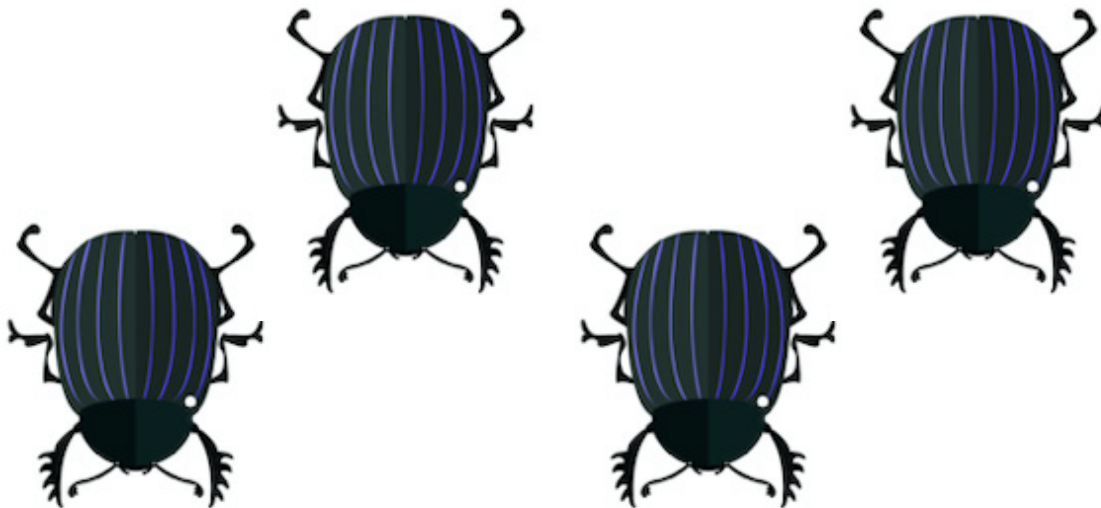


**The answer was 24 legs.**

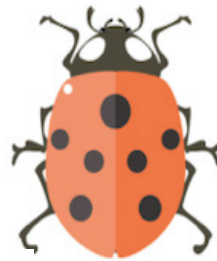


**How many beetles?**

**4 beetles**



**The answer was 30 legs.**



**How many beetles?**

**5 beetles**



**The answer was 36 legs.**



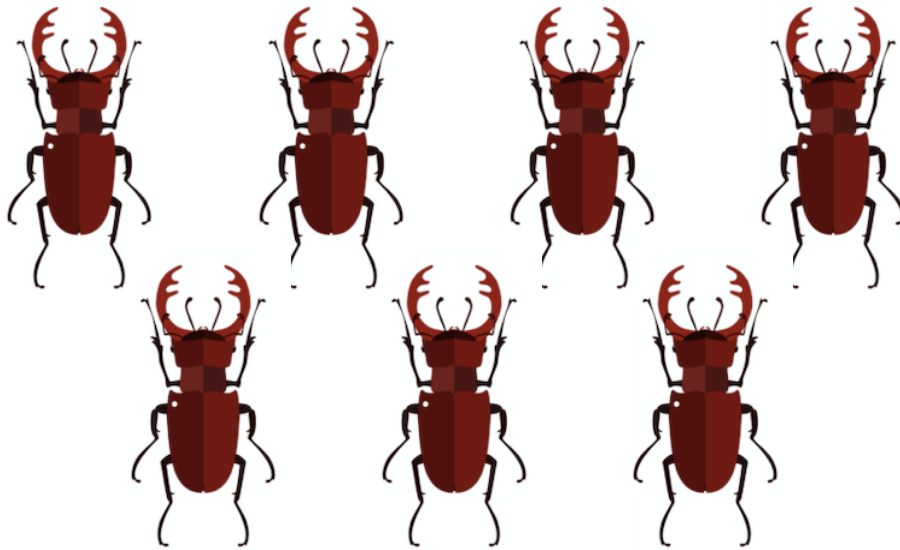
**?**

**How many beetles?**

**6 beetles**

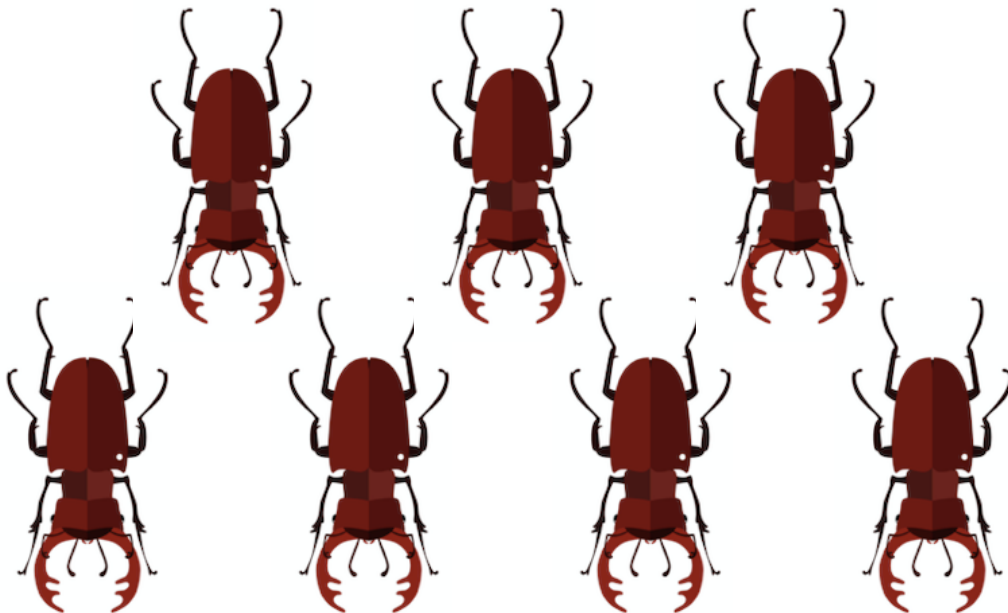


**The answer was 42 legs.**

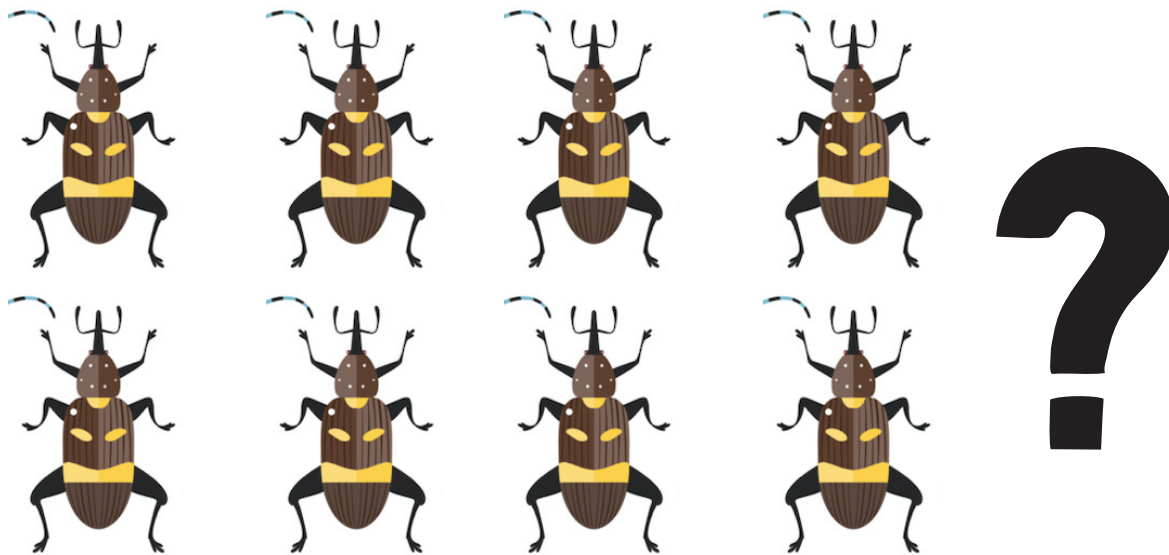


**How many beetles?**

**7 beetles**

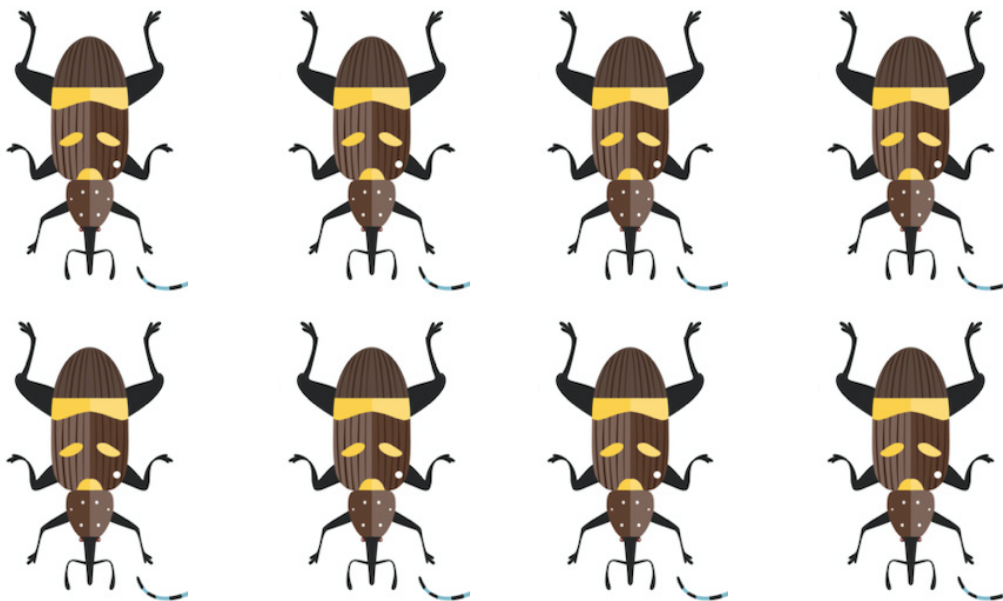


**The answer was 48 legs.**



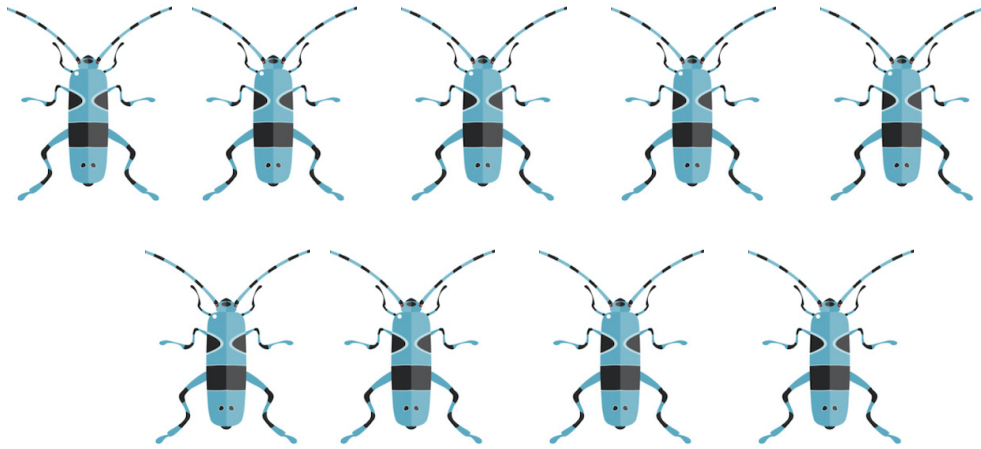
**How many beetles?**

**8 beetles**



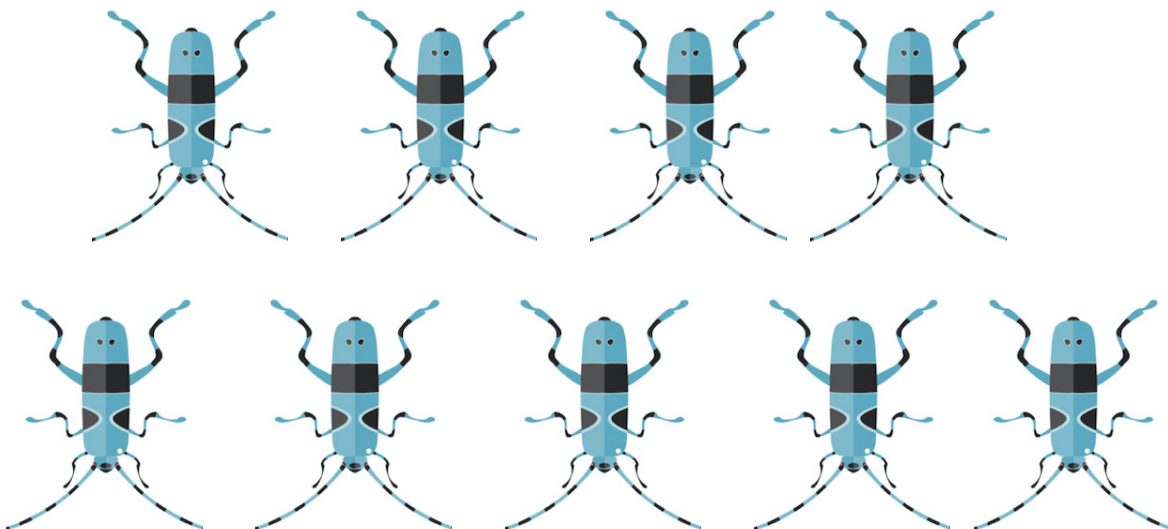


**The answer was 54 legs.**

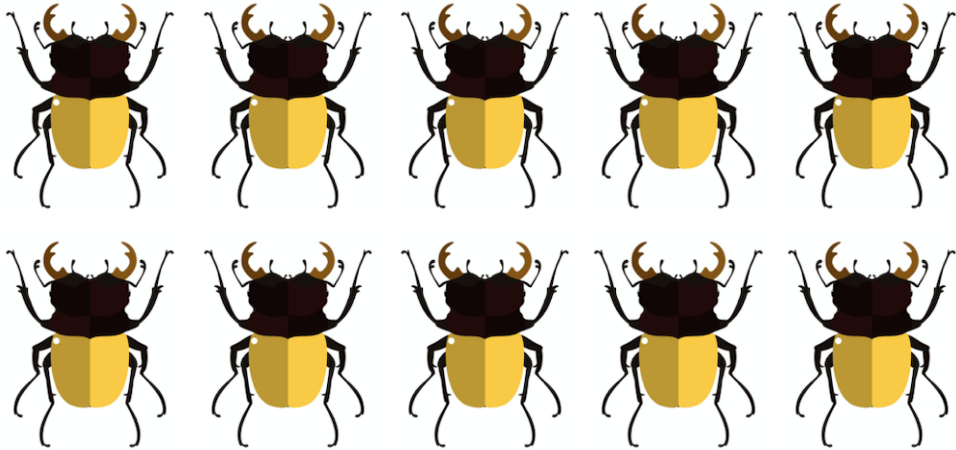


**How many beetles?**

**9 beetles**



**The answer was 60 legs.**



**How many beetles?**

**10 beetles**

